

## STUDENTS' COURSE EVALUATION QUESTIONNAIRE 2023

The Students course evaluation for 2022-23 was conducted students' portal through LMS during the year 2022-23. This increased the overall response rate and prompt response. The overall response rate was much higher than previously paper-based surveys or through google forms. The surveys were analyzed using R Statistical Programming and found various aggregated trends. It is worth mentioning that faculty evaluation was also merged in the Students Course Evaluation Form to collect maximum response. Later on both survey forms were separated during the analysis.

The Students Course Evaluation Survey Forms has been provided with various Indicators grouping sets of questionnaires to assess various aspects of teaching and course parameters. The questionnaire have been assigned short names for analysis.

Below tabulated are the questions with their short names alongside various indicators corresponding to various Questions in the survey form.

Questionnaire description in Students' Course Evaluation for Analysis

Qshort	Indicators	Questions
CCO01	Course-Content&Organization	The course objectives were clear
CCO02	Course-Content&Organization	The Course workload was manageable
CCO03	Course-Content&Organization	The Course was well organized (e.g. timely access to materials, notification of changes, etc.)
STC02	Stud.Contribution	I participated actively in the Course
STC03	Stud.Contribution	I think I have made progress in this Course
ENV01	Environment	I think the Course was well structured to achieve the learning outcomes (there was a good balance of lectures, tutorials, practical etc.)
ENV02	Environment	The learning and teaching methods encouraged participation.
ENV03	Environment	The overall environment in the class was conducive to learning.
ENV04	Environment	Classrooms were satisfactory
RES01	Resources	Learning materials (Lesson Plans, Course Notes etc.) were relevant and useful.
RES02	Resources	Recommended reading Books etc. were relevant and appropriate
RES03	Resources	The provision of learning resources in the library was adequate and appropriate
RES04	Resources	The provision of learning resources on the Web was adequate and appropriate ( if relevant)
QD01	Quality.of.Delivery	The Course stimulated my interest and thought on the subject area
QD02	Quality.of.Delivery	The pace of the Course was appropriate
QD03	Quality.of.Delivery	Ideas and concepts were presented clearly
ASSE01	Assessment	The method of assessment were reasonable
ASSE02	Assessment	Feedback on assessment was timely
ASSE03	Assessment	Feedback on assessment was helpful
FACEV01	Faculty.Eval	I understood the lectures
FACEV02	Faculty.Eval	The material was well organized and presented
FACEV03	Faculty.Eval	The Teacher was responsive to student needs and problems

### Quality Enhancement Cell

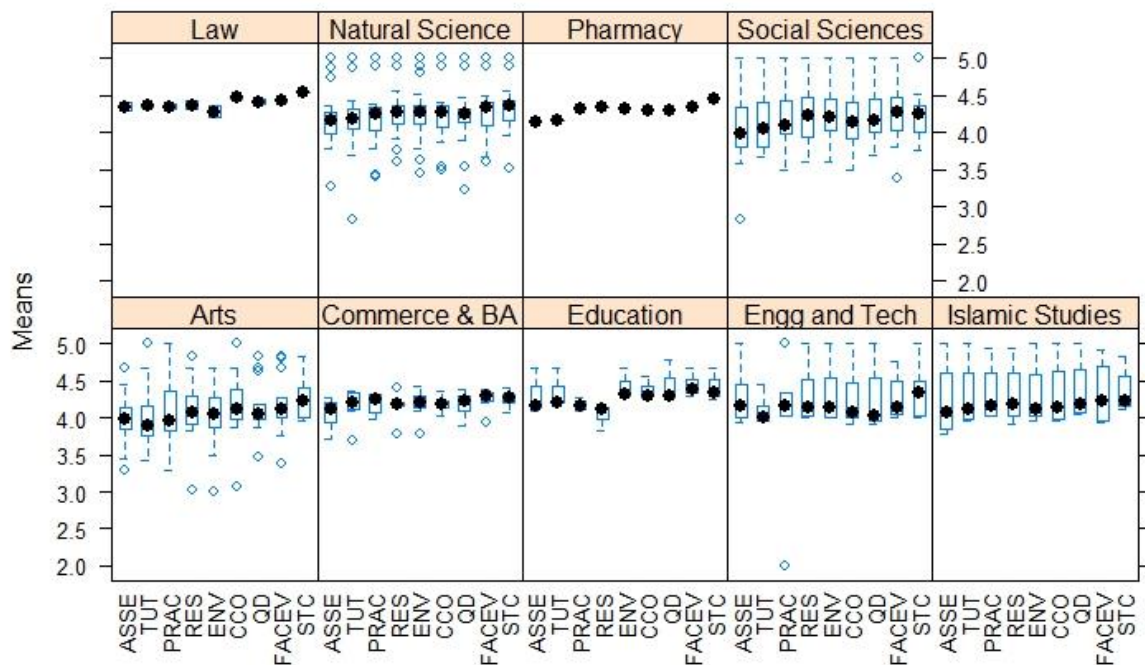
FACEV04	Faculty.Eval	Had the Teacher been regular throughout the course?
TUT01	Tutorial	The material in the tutorials was useful
TUT02	Tutorial	I was happy with the amount of work needed for tutorials
TUT03	Tutorial	The Teacher dealt effectively with my problems
PRAC01	Practical	The material in the practical was useful
PRAC02	Practical	The Teacher dealt effectively with my problems during practicals.

The department-wise number of responses have been tabulated as Annexure-A and the corresponding department-wise analysis follows in separate folder. Actions were taken to comply on feedback and detailed department-wise analysis were shared with each Head of the Department. The evidence of E-mails sent to all HoDs is attached herewith.

### Exploratory Analysis:

Various indicators as tabulated above were targeted to deduce the mean values for each academic faculty in main campus. The trend shows a positive response besides few outliers. The highest rating contributes to the Students' Contribution and lowest to the Assessment and Tutorial overall with outliers in certain plots in these indicators as below:

### BoxPlots of Students' Course Evaluation 2023



### Statistical Analysis

The overall exploratory analysis presumed the indicator 'Assessment' having lowest rating so to gauge its association with other indicators the Chi-square test on various indicators aggregated for main campus has been tabulated below:

Quality Enhancement Cell

Cell Contents

Chi-square contribution	N
N / Row Total	
N / Col Total	
N / Table Total	

Total Observations in Table: 267736

fmeItted\$Indicators	fmeItted\$rating					Row Total
	1	2	3	4	5	
ASSE	845	1020	1745	13401	11675	28686
	1.618	87.779	165.243	30.518	145.839	
	0.029	0.036	0.061	0.467	0.407	0.107
	0.112	0.144	0.146	0.112	0.096	
	0.003	0.004	0.007	0.050	0.044	
CCO	862	701	984	12778	13361	28686
	3.496	4.801	70.226	0.000	7.181	
	0.030	0.024	0.034	0.445	0.466	0.107
	0.114	0.099	0.082	0.107	0.110	
	0.003	0.003	0.004	0.048	0.050	
ENV	1251	1115	1558	16561	17763	38248
	27.615	9.793	13.927	13.213	7.304	
	0.033	0.029	0.041	0.433	0.464	0.143
	0.166	0.157	0.130	0.139	0.146	
	0.005	0.004	0.006	0.062	0.066	
FACEV	1043	915	1280	16509	18501	38248
	1.164	9.906	109.198	16.268	68.830	
	0.027	0.024	0.033	0.432	0.484	0.143
	0.138	0.129	0.107	0.138	0.152	
	0.004	0.003	0.005	0.062	0.069	
PRAC	664	480	1089	8078	8813	19124
	28.878	1.505	63.289	22.700	1.385	
	0.035	0.025	0.057	0.422	0.461	0.071
	0.088	0.068	0.091	0.068	0.072	
	0.002	0.002	0.004	0.030	0.033	
QD	764	730	1173	13067	12952	28686
	2.484	1.300	9.649	6.602	0.810	
	0.027	0.025	0.041	0.456	0.452	0.107
	0.101	0.103	0.098	0.110	0.106	
	0.003	0.003	0.004	0.049	0.048	
RES	944	896	1808	17101	17499	38248
	16.757	14.015	5.334	0.252	0.492	
	0.025	0.023	0.047	0.447	0.458	0.143
	0.125	0.126	0.151	0.143	0.144	
	0.004	0.003	0.007	0.064	0.065	
STC	298	339	710	8475	9302	19124
	107.906	56.024	24.969	0.214	41.197	
	0.016	0.018	0.037	0.443	0.486	0.071
	0.039	0.048	0.059	0.071	0.076	
	0.001	0.001	0.003	0.032	0.035	
TUT	878	911	1640	13278	11979	28686
	5.917	29.366	98.501	19.679	88.656	
	0.031	0.032	0.057	0.463	0.418	0.107
	0.116	0.128	0.137	0.111	0.098	
	0.003	0.003	0.006	0.050	0.045	
Column Total	7549	7107	11987	119248	121845	267736
	0.028	0.027	0.045	0.445	0.455	

Statistics for All Table Factors

Pearson's Chi-squared test

Chi^2 = 1441.801    d.f. = 32    p = 4.760783e-283

## Quality Enhancement Cell

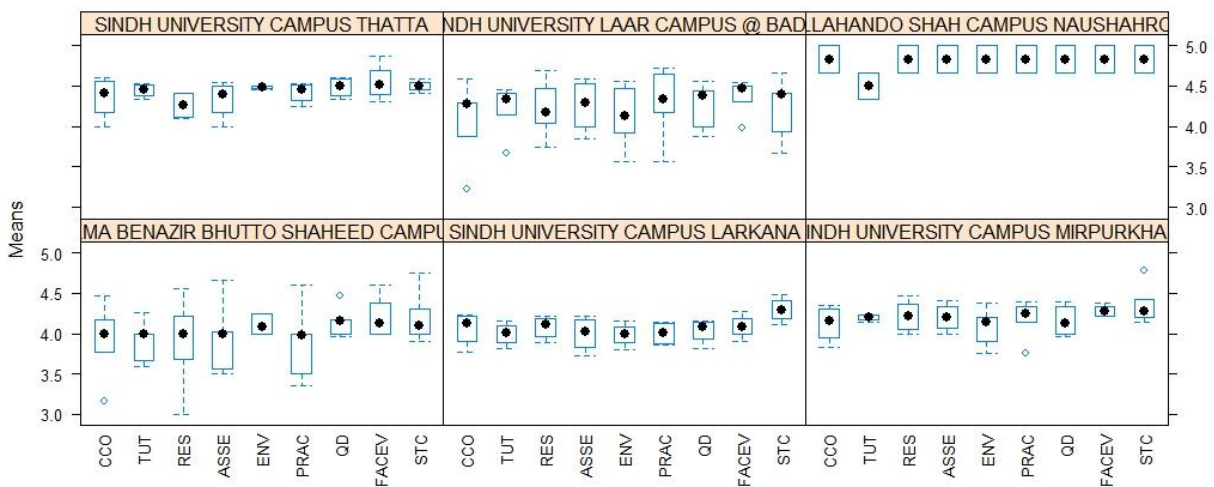
The p value is much less than .05, therefore, various indicators differ in response trends statistically. Considering the 'Assessment' trend in previous exploratory analysis and considering the statistical analysis above, we find that although, highest number of students have given a rating of 5 to the Assessment as they have given to the other indicators, yet to some extent, more than other indicators, some 1745 responses fall under the rating of '3' (Uncertain), which is evident by the largest Chi-square contribution of 165.243 under the ratings of '3' in Assessment. Therefore, questionnaire under Assessment may require further clarification for students and may be updated in next evaluation phase.

### Conclusion:

The aggregate rating from students have shown greater positive trend in Students' Course Evaluation with very few negative responses. An unusual number of 'Uncertain' responses e.g. in 'Assessment' and 'Tutorial' require modification or updates in questionnaire or further clarification thereof in next phase.

Abid Ali Shaikh,  
Senior Data Processing Officer

**Boxplots of Students Course Evaluation (BWPlots) 2022-23  
in various Campuses**



## Quality Enhancement Cell

Annex-A

Number of Questionnaire Form submissions during Fall 2022 from the Departments.

<b>DEPARTMENT_NAME</b>	<b>NUMBER OF FORMS</b>
ANTHROPOLOGY & ARCHAEOLOGY	55
ARABIC	40
ART & DESIGN	66
BANKING AND FINANCE	135
BIOCHEMISTRY	339
BIOTECHNOLOGY	102
BOTANY	463
BUSINESS ADMINISTRATION	394
CENTRE FOR PHYSICAL EDUCATION HEALTH & SPORTS SC	26
CENTRE FOR PURE & APPLIED GEOLOGY	54
CENTRE FOR RURAL DEVELOPMENT COMMUNICATION	31
CENTRE OF ENVIRONMENTAL SCIENCES	77
CHEMISTRY	331
COMMERCE	282
COMPARATIVE RELIGION & ISLAMIC CULTURE	115
COMPUTER SCIENCE	196
CRIMINOLOGY	196
ECONOMICS	64
EDUCATION	127
ELECTRONICS	28
ELECTRONICS (FET)	20
ENGLISH	395
FRESH WATER BIOLOGY & FISHERIES	18
GENDER STUDIES	44
GENERAL HISTORY	44
GENETIC ENGINEERING	119
GEOGRAPHY	172
INFORMATION TECHNOLOGY	45
INFORMATION TECHNOLOGY (FET)	357
INTERNATIONAL RELATIONS	167
LAW	1194
LIBRARY INFORMATION SCIENCE & ARCHIVE STUDIES	30
MATHEMATICS	67
MEDIA & COMMUNICATION STUDIES	102
MEDICAL LABORATORY TECHNOLOGY	53
MICROBIOLOGY	112
MOHTARMA BENAZIR BHUTTO SHAHEED CAMPUS DADU	105
MUSLIM HISTORY	62
NUTRITION & FOOD TECHNOLOGY	262
PAKISTAN STUDY CENTRE	54
PERSIAN	6
PHARMACY	821
PHILOSOPHY	21

Quality Enhancement Cell	
PHYSICS	210
PHYSIOLOGY	21
POLITICAL SCIENCE	241
PSYCHOLOGY	45
PUBLIC ADMINISTRATION	62
SINDH DEVELOPMENT STUDIES CENTRE	74
SINDH UNIVERSITY CAMPUS LARKANA	58
SINDH UNIVERSITY CAMPUS MIRPURKHAS	207
SINDH UNIVERSITY CAMPUS THATTA	63
SINDH UNIVERSITY LAAR CAMPUS @ BADIN	120
SINDHI	7
SOCIAL WORK	58
SOCIOLOGY	110
SOFTWARE ENGINEERING	12
SOFTWARE ENGINEERING (FET)	170
STATISTICS	99
SYED ALLAHANDU SHAH CAMPUS NAUSHAHRO FEROZ	4
TELECOMMUNICATION	1
TELECOMMUNICATION (FET)	4
URDU	29
ZOOLOGY	576
<b>Grand Total</b>	<b>9562</b>

Moreover, there are 5487 responses received from all the Semesters from January 2023 to May 2023 session attached herewith.